

LIFE+ - Nature and Biodiversity



...in a nutshell



Where do we come from?

- **implementing the EU Birds and Habitats Directives, incl. the NATURA 2000 network of sites**
- **1992-2006: 875 projects (EU contribution 773 mio €)**
- **LIFE+ (2007-13): extended towards general biodiversity issues (Commission Communication)**
- **2007-2009: 234 projects (EU contribution 333 mio €)**



Site-based project approaches

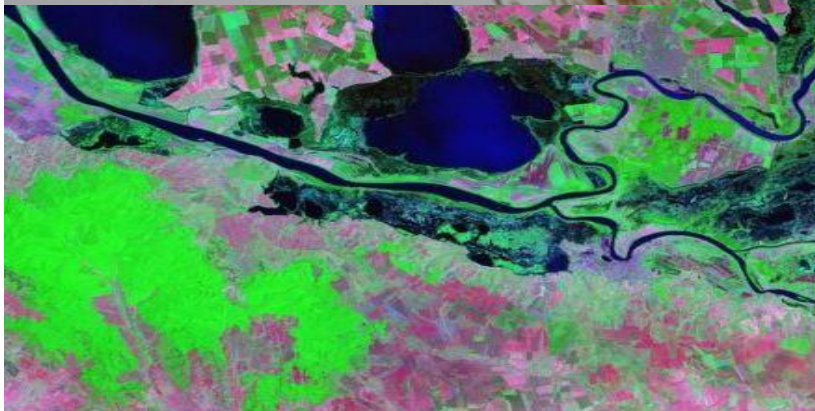
- **restoring natural habitats in Natura 2000 sites**
- **heavy initial investments: land purchase + technical planning/implementation of restoration works**
(long-term management with other resources)
- **examples: sand dunes, heathlands, wetlands, rivers, natural grasslands, peat bogs, lagoons, etc.**





Measures for threatened species

- **focus on species listed in the annexes of the EU Nature Directives**
- **technical measures: nest platforms, adapting electric powerlines, building fish-passes, etc.**
- **captive breeding, reintroduction, eradication of invasive species, etc.**





Conservation and human activities: resolving conflicts

- **large carnivores: protecting bee hives, providing guard dogs, electric fences, etc.**
- **conservation on agricultural lands: demonstration of agri-environmental practises**





Additional support to Natura 2000

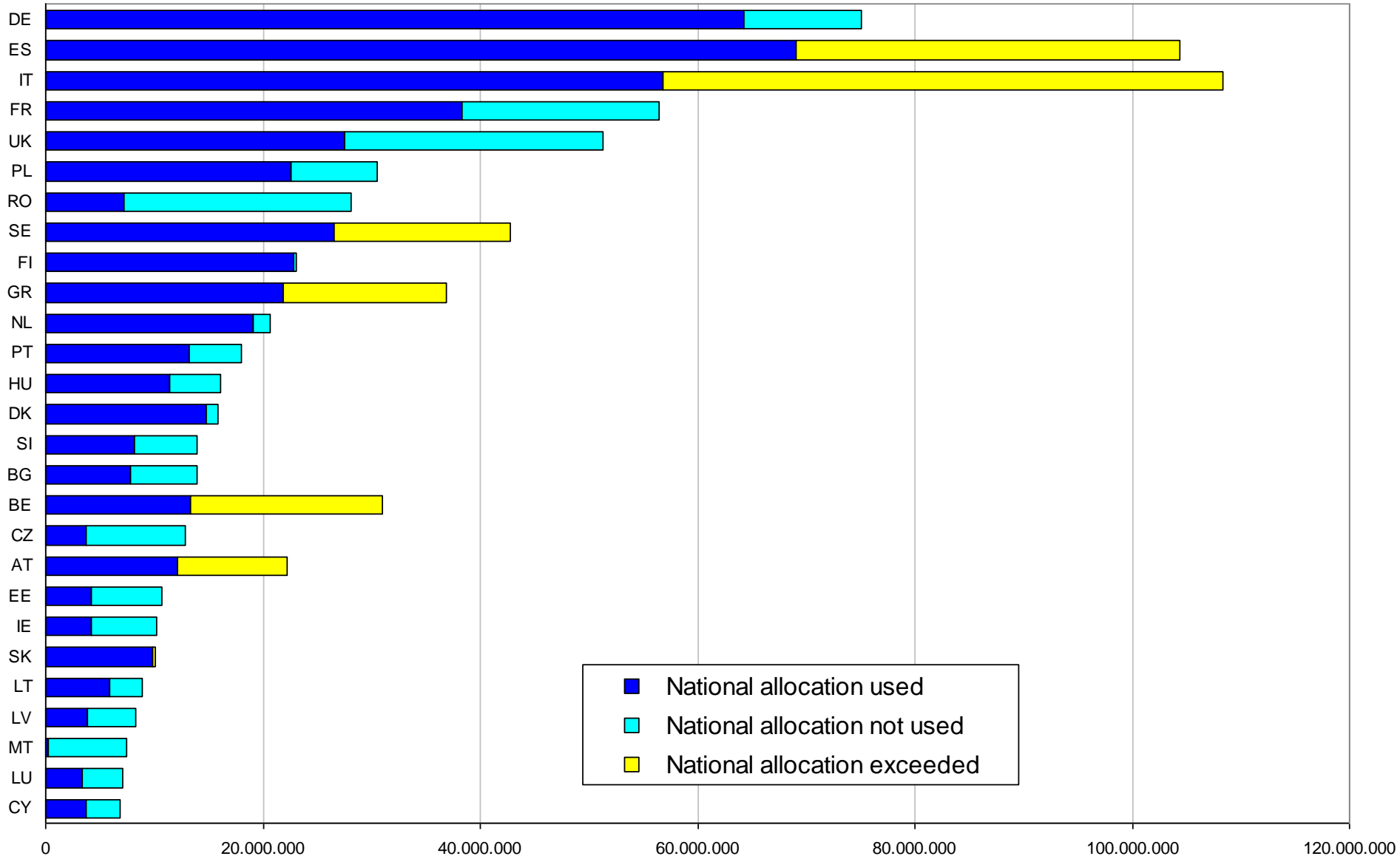
- **inventories for identifying Natura 2000 sites (prior to EU accession)**
- **ongoing: inventories for identifying Natura 2000 off-shore sites**
- **development of Natura 2000 site management plans**



EU added value of LIFE-Nature

- **a positive message for Natura 2000, the European network of protected areas**
- **visibility of EU support to nature conservation**
- **trans-national conservation issues and projects**
- **networking between projects / know-how exchange**

LIFE+ - 2007 to 2009





Where do we go from here?

Main conclusions of conference on the future of LIFE-Nature and Biodiversity

- **Continuation of a centralised dedicated instrument, together with reinforced integration in other instruments**
- **Cover wider biodiversity but keep focus on Natura 2000**
- **Programmatic approach with dedicated instrument as a catalyst**
- **More coherent approach by a variety of instruments**