

Flemish experience in HMWB designation

Wim Gabriels - Henk Maeckelberghe - Ann Huysmans -
Adelheid Vanhille - Koen Martens - Ingrid Baten (VMM) - Kris
Van Looy - Luc Denys - Anik Schneiders - Jan Breine - Ilse
Simoens (INBO) - Gert Van Hoydonck (ANB)

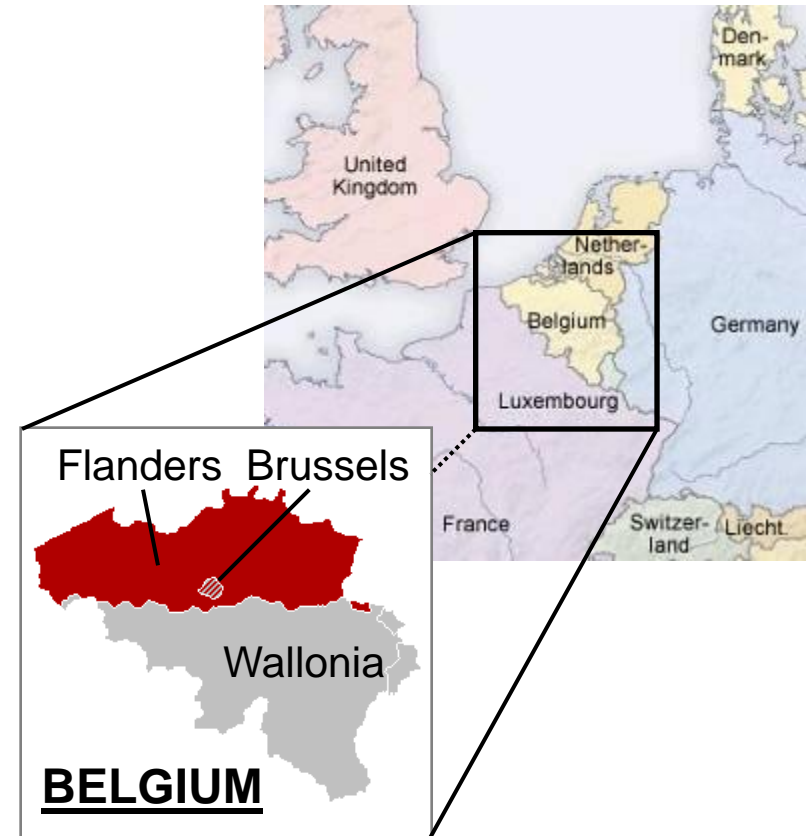
***HMWB workshop
Brussels, 12-13 march 2009***

Contents

- WFD implementation in Flanders
- Water bodies in Flanders
- Water uses according to Flemish legislation
- Designation of lakes
- Designation of coastal waters
- Designation of rivers and transitional waters
- Overview of results

WFD implementation in Flanders (Belgium)

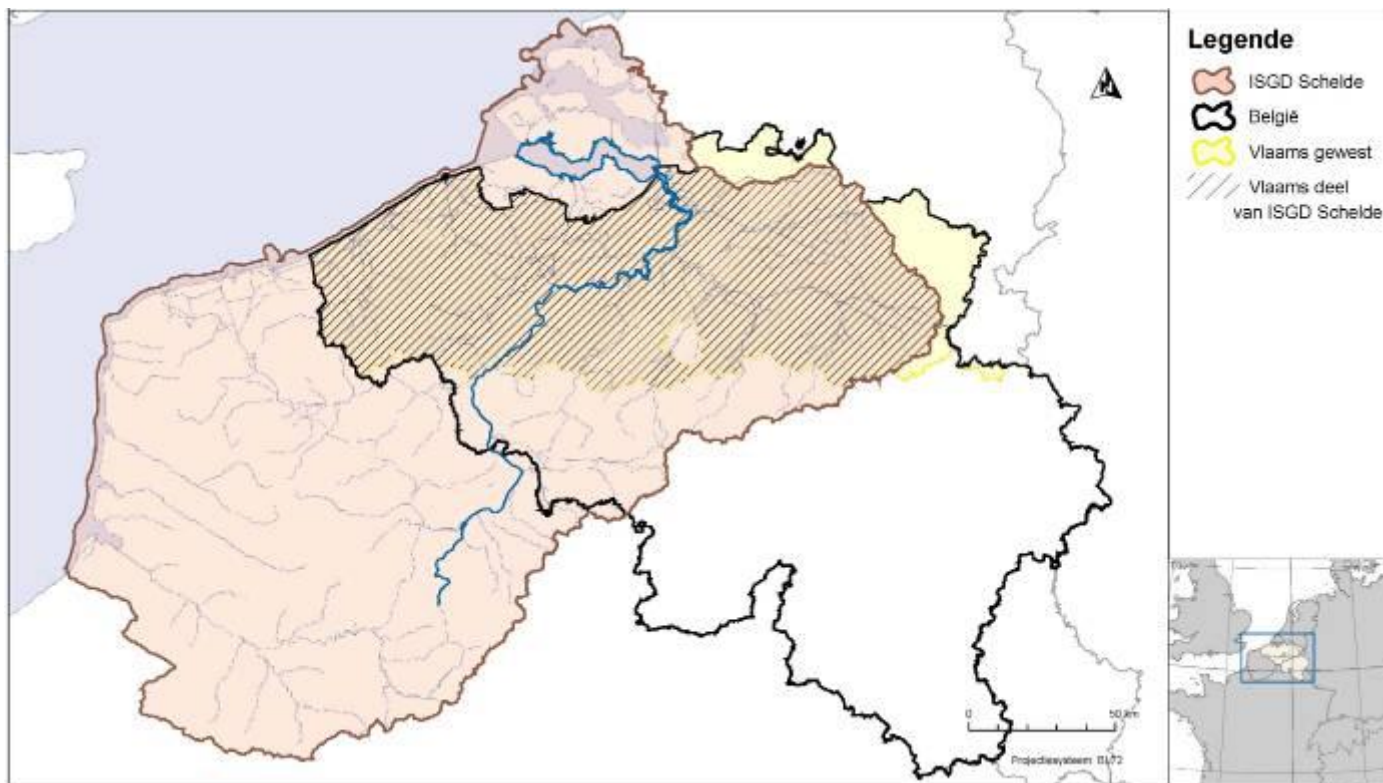
- **Belgium**: separate regions, separate legislations
- **Flanders**: Decree on Integrated Water Policy (2003)
- Implementation: **coordinated** by the Coordination Commission Integrated Water Policy (**CIW**)
- **Monitoring** mainly by Flemish Environment Agency (**VMM**), and also by Research Institute for Nature and Forest (**INBO**)



Internet: www.ciwvlaanderen.be
www.volvanwater.be
www.vmm.be
www.inbo.be

Water bodies in Flanders

- Two International River Basin Districts:
 - Scheldt
 - Meuse



Water bodies in Flanders

- Two International River Basin Districts:
 - Scheldt
 - Meuse



Water bodies in Flanders

	Rivers	Lakes	Transitional waters	Coastal waters	Total
Artificial	34	17	3	0	54
Non-artificial	143	1	3	1	148
Total	177	18	6	1	202

Water uses according to Flemish legislation

WFD	Flemish Decree
wider environment	environment
navigation, port facilities, recreation	Important activities related to navigation, port facilities, water supply for human consumption or sustainable power generation
water storage (drinking-water supply, power generation, irrigation)	
water regulation, flood protection, land drainage	flood protection (houses and buildings outside inundation zones)
other sustainable development activities	

Designation of lakes

- Lakes: only one non-artificial waterbody
 - Vinne (Zoutleeuw, south-east of Flanders)
 - originally a natural lake but drained in 19th century and recently (2004) refilled but water level managed permanently
 - therefore considered as HMWB



Designation of coastal waters

- Coastal waters: only one non-artificial waterbody
 - Zwin (at the Belgian-Dutch border, shared with the Netherlands)
 - No reason for designation as HMWB; therefore considered as natural

Designation of rivers and transitional waters

- 146 water bodies
- Water uses according to the Flemish Decree:
 1. Navigation, including port facilities
 2. Water for human consumption
 3. Sustainable power generation
 4. Flood protection

Designation of rivers and transitional waters

1. Navigation, including port facilities:

all waterways designated for navigation in class I, II, III, IV, Va, Vb, VIb or VII according to CEMT (Conférence Européenne des Ministres de Transport): **25 water bodies**

2. Drinking water supply:

all waterways that were modified for the purpose of supplying water to reservoirs for drinking water production, were designated based on expert judgement and discussion with the drinking water companies: **3 water bodies**

Designation of rivers and transitional waters

3. Power generation:

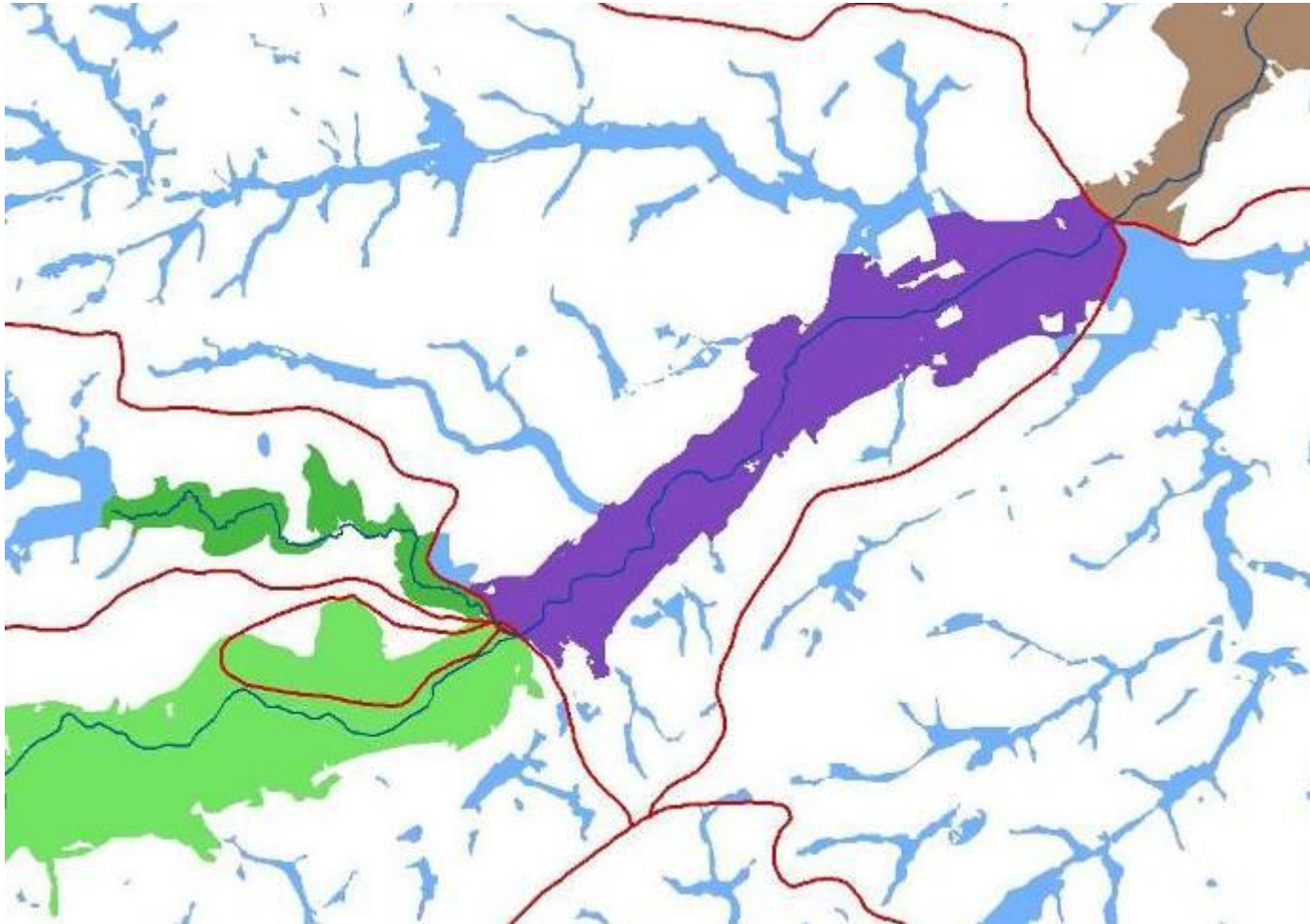
maximum threshold values were used for the change in discharge fluctuations. These threshold values are waterbody-specific and equal to the rise in discharge fluctuations that would characterise the natural discharge pattern of the waterbody: **2 water bodies**

4. Flood protection:

at least 10 % of the surface of the natural inundation zone is urbanised (this criterium is in a small number of cases overruled by expert judgementexpert judgement): **92 water bodies**

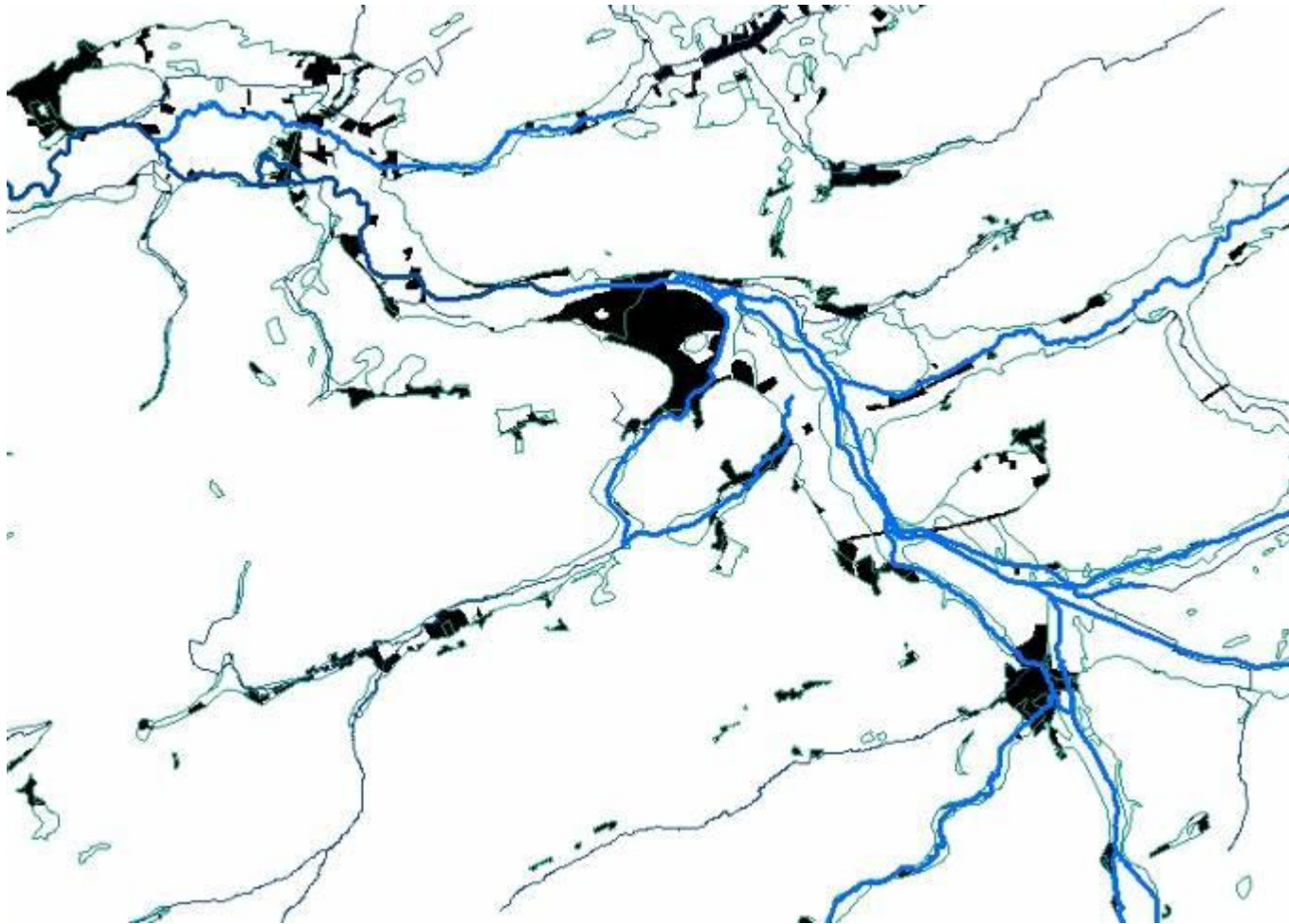
Designation of rivers and transitional waters

- Natural inundation zones



Designation of rivers and transitional waters

- Urbanisation within inundation zones



Designation of rivers and transitional waters

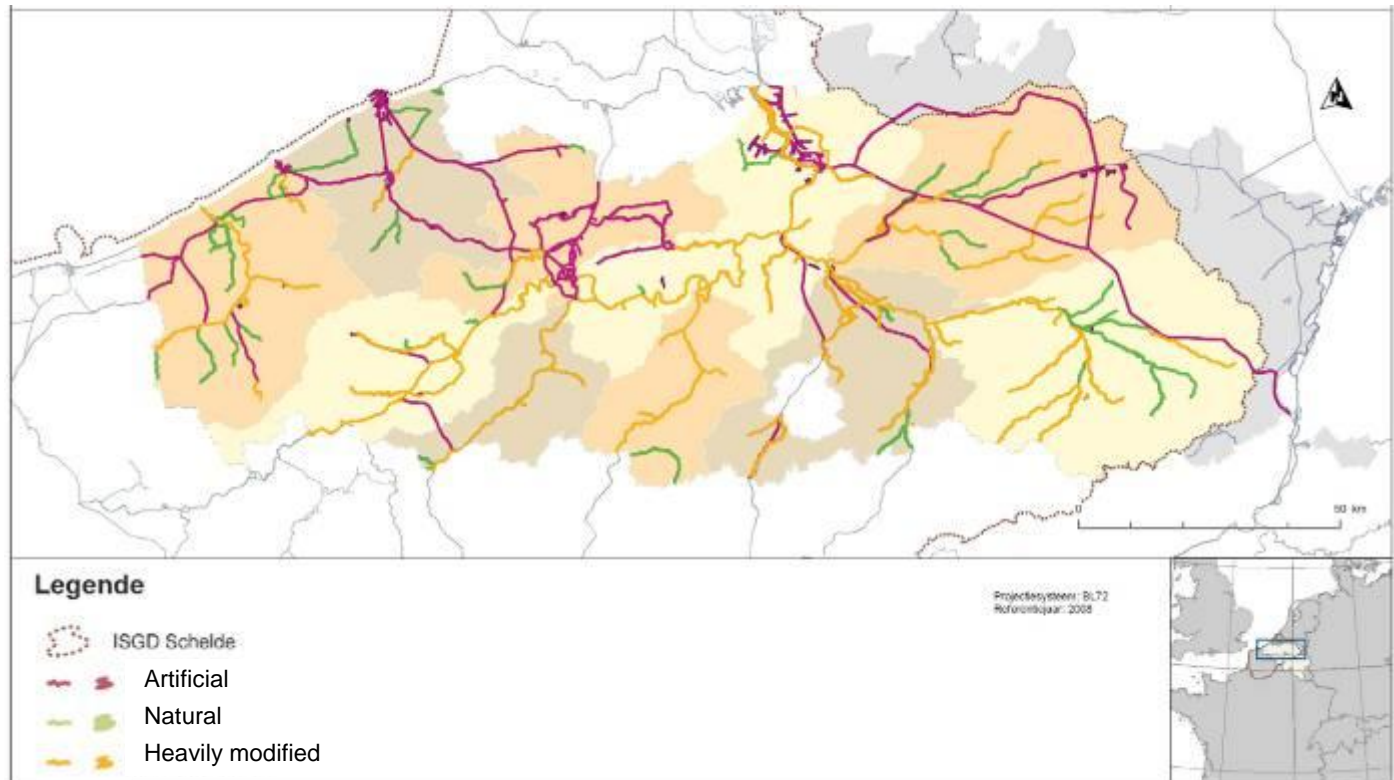
- Combination of the relevant uses:
 - Navigation, including port facilities: 25
 - Water for human consumption: 3
 - Sustainable power generation: 2
 - Flood protection: 92
- All water bodies with at least one of these uses were designated
- Total number designated:
 - Rivers: 96 (out of 143)
 - Transitional waters: 3 (out of 3)

Overview of results

	Rivers	Lakes	Transitional waters	Coastal waters	Total
Artificial	34	17	3	0	54
HMWB	96	1	3	0	100
Natural	47	0	0	1	48
Total	177	18	6	1	202

Overview of results

- Two International River Basin Districts:
 - Scheldt
 - Meuse



Overview of results

- Two International River Basin Districts:
 - Scheldt
 - Meuse

